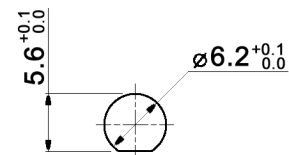


PANEL MOUNTING



CONTACT ARRANGEMENT

code for x	function	toggle towards keyway	toggle opposite to keyway
N	On-On	1-2, 4-5	2-3, 5-6
R	Mom-On	1-2, 4-5	2-3, 5-6

code for x	function	toggle towards keyway	toggle in center	toggle opposite to keyway
P	On-Off-On	1-2, 4-5	open	2-3, 5-6
S	Mom-Off-Mom			
T	Mom-Off-On			
PA	On-On-On	1-2, 4-5	2-3, 4-5	2-3, 5-6
SA	Mom-On-Mom			
TA	Mom-On-On			

Specifications:

- Contact rating:** 3A, 250V AC / 6A, 125V AC
4A, 30V DC / 5A, 12V DC
6A, 6V DC
- Contact resistance:** 20mOhm max.
- Insulation resistance:** 1 000MOhm min. at 500V DC
- Dielectric strength:** 1 500V, 50Hz for the duration of 1 minute
- Operating temperature:** -45°C to +140°C
- Mechanical life:** min. 200 000 cycles (SA, TA: 100 000 cycles)
- Soldering conditions:** hand-soldering: max.: 420°C, 3sec., 60W
auto-soldering: max.: 270°C, 5sec.
- Mounting instruction:** max. torque: 49Ncm
- Material:** Terminal: brass, C1020 silver plated
Case: DAP
Housing: stainless steel, CNS9265
Bushing: copper alloy, C3604BD nickel plated
Actuator: copper alloy, C3604BD chrome plated
- Included accessories:** 1 pc. nut M6x0.75, nickel plated, 9mm wrench size
1 pc. tooth washer
1 pc. O-ring
- Sealing:** IP 67



Tolerances: 0.00: ±0.25mm 0.0: ±0.40mm	Date	Name
	11/09	dr
Dimension	01/11	dr
Sealing	12/10	dr
Modifications	Date	Name

MTE 206 x

30 19 57

Page

1/1

knitter-switch